

CONNECT OSTRA

MARIE BĚLOHOUBKOVÁ
ATELIER REHWALDT
DRESDEN, OSTRAUFER

ATK1 ZS
2018-2019

TABLE OF CONTENTS:

LOCATION

_MAP M 1:10 000

_CURRENT PROBLEMS OF THE SITE

HISTORY

_CASPAR DAVID FRIEDRICH PAINTING

_MAP_OLD RIVER

_ALLEES

8-13 CHARACTER OF THE PLACE

_MAP_FLOODED AREA

_OWNERS

_CURRENT SURFACES

_CURRENT PHOTOS

_CONTEXT

14- MY PROJECT CONNECT OSTRA

_MY QUEST

_NEW BIKEWAY

_THE NEW CAFÉ

_STAIRS TO THE ELBE WATER LEVEL

_MULTIFUNCTIONAL PAVED AREA

_THE NEW PARK

_PARKING PLACE

_SPACE IN BETWEEN THE BRIDGES

_RAMP CONNECTION WITH MARIENBRÜCKE

29 REFERENCES

SITEPLAN M 1:500



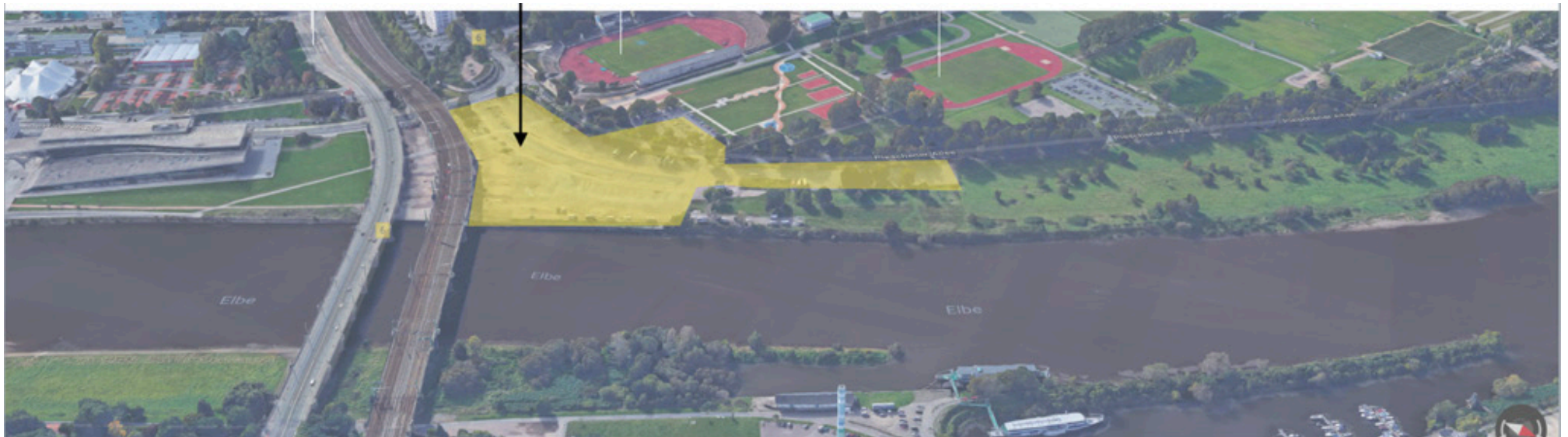
CURRENT PROBLEMS OF THE SITE

2

HORIZONTAL DISCONNECTION, NO REGULAR PATHWAY OR A BIKEWAY _ WILD BANK NOW

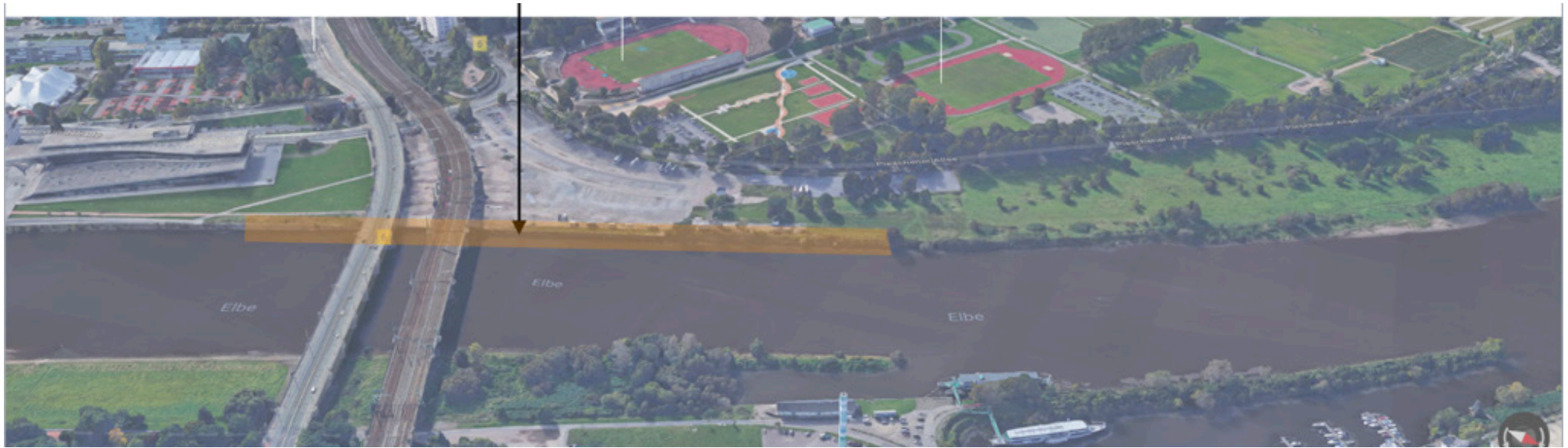


HORIZONTAL DISCONNECTION, NO VALUABLE USE _ PARKING PLACE NOW



CURRENT PROBLEMS OF THE SITE

VERTICAL DISCONNECTION OF THE RIVER BANK WITH THE RIVER



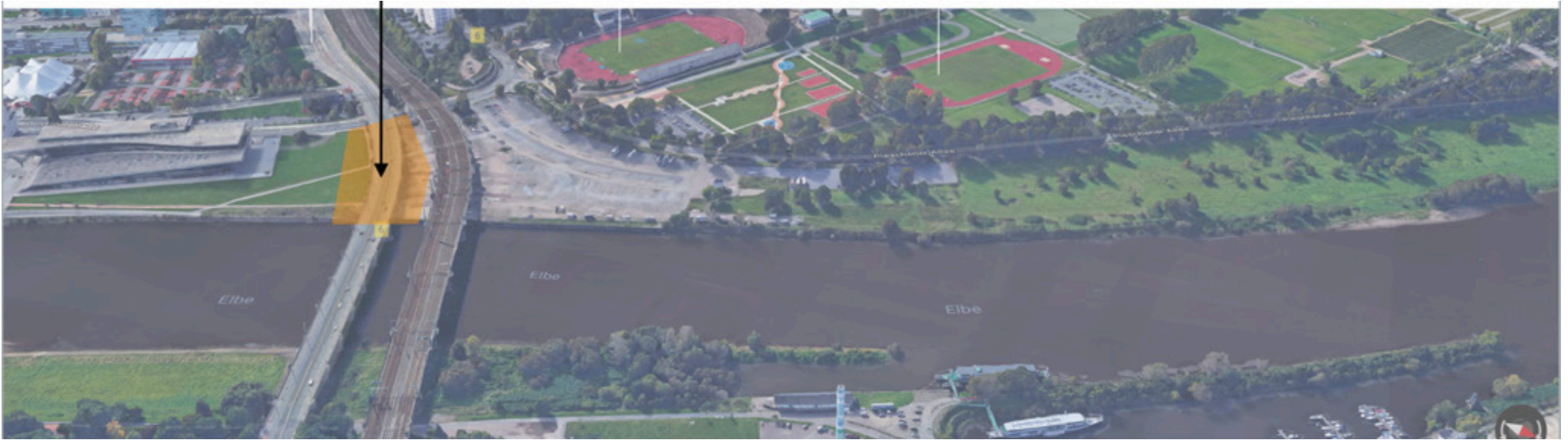
HORIZONTAL DISCONNECTION, FORGOTTEN PLACE IN BETWEEN THE BRIDGES



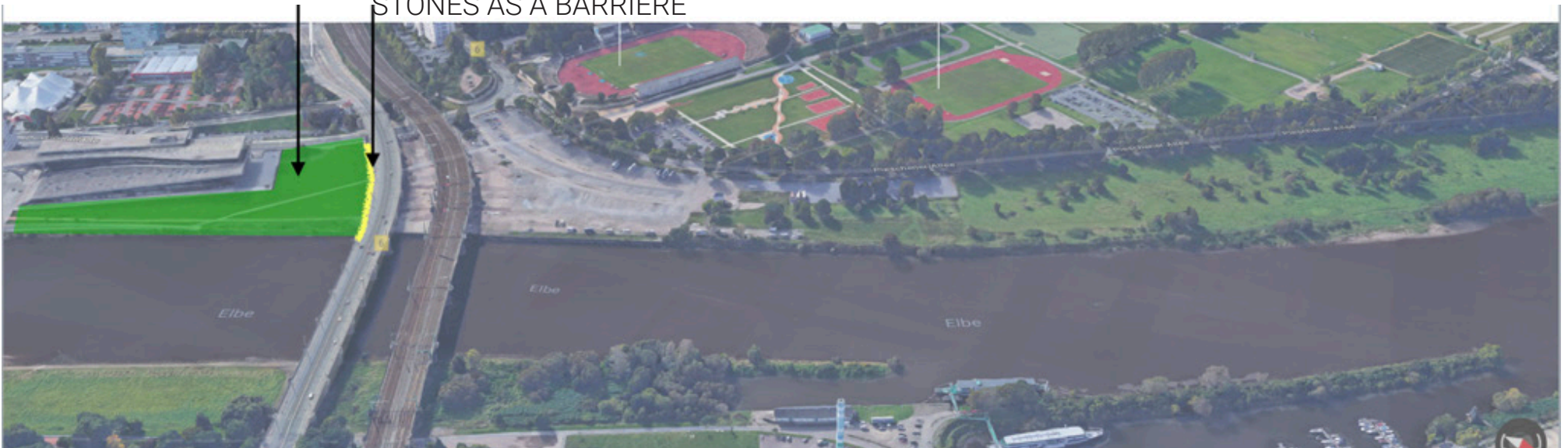
CURRENT PROBLEMS OF THE SITE

4

VERTICAL DISCONNECTION OF THE BRIDGE (PEDESTRIANS, CYCLISTS) WITH THE RIVER



HORIZONTAL DISCONNECTION, CONTRAST OF THE MAINTAINED PLACE AND FORGOTTEN PLACE
STONES AS A BARRIERE



HISTORY

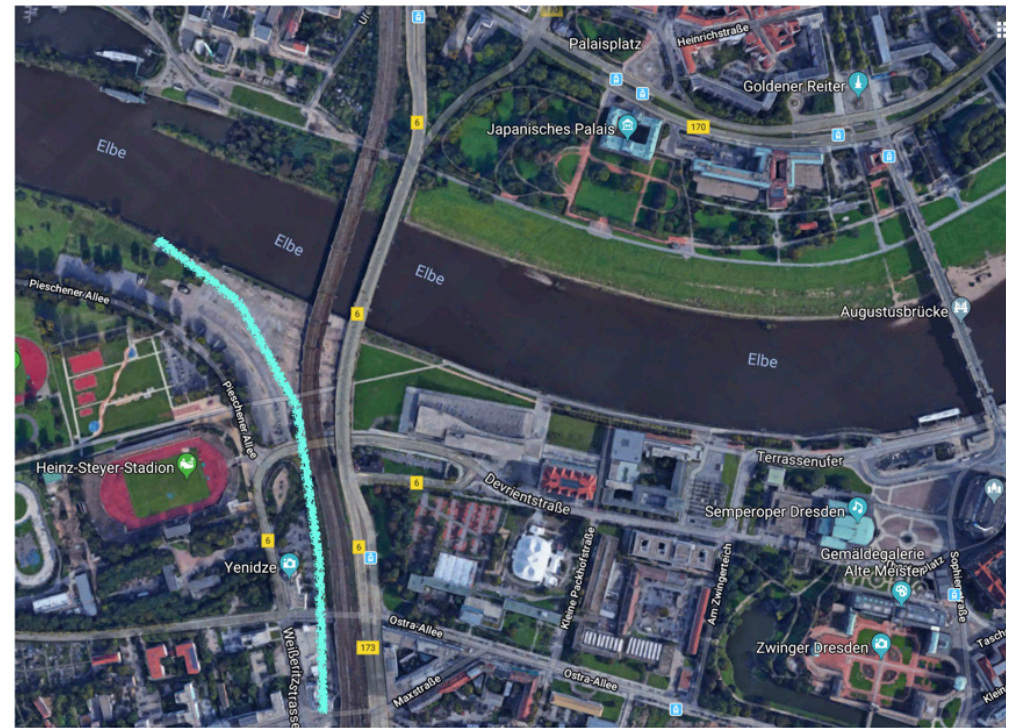
THE PART OF FRIEDRICHSTADT I WORK WITH IS CALLED OSTRAGEHEGE. THE OSTRAGEHEGE WAS NAMED AFTER THE VILLAGE OSTRÄ, WHICH WAS FIRST MENTIONED IN 1206. THE NAME OSTRÄ MEANS "ISLAND". FOR MY PROJECT IS IMPORTANT TO MENTION THAT THERE USED TO BE RIVER BASIN THAT FLOWED INTO THE ELBE. EQUALLY IMPORTANT ARE ALSO HISTORICAL ALLEYS WITH *Tilia cordata* TREES. GERMAN ROMANTIC LANDSCAPE PAINTER CASPAR DAVID FRIEDRICH DRAW INSPIRATION FOR SOME OF HIS WORKS FROM THIS PLACE.

CASPAR DAVID FRIEDRICH, DAS GROSSE GEHEGE, 1832





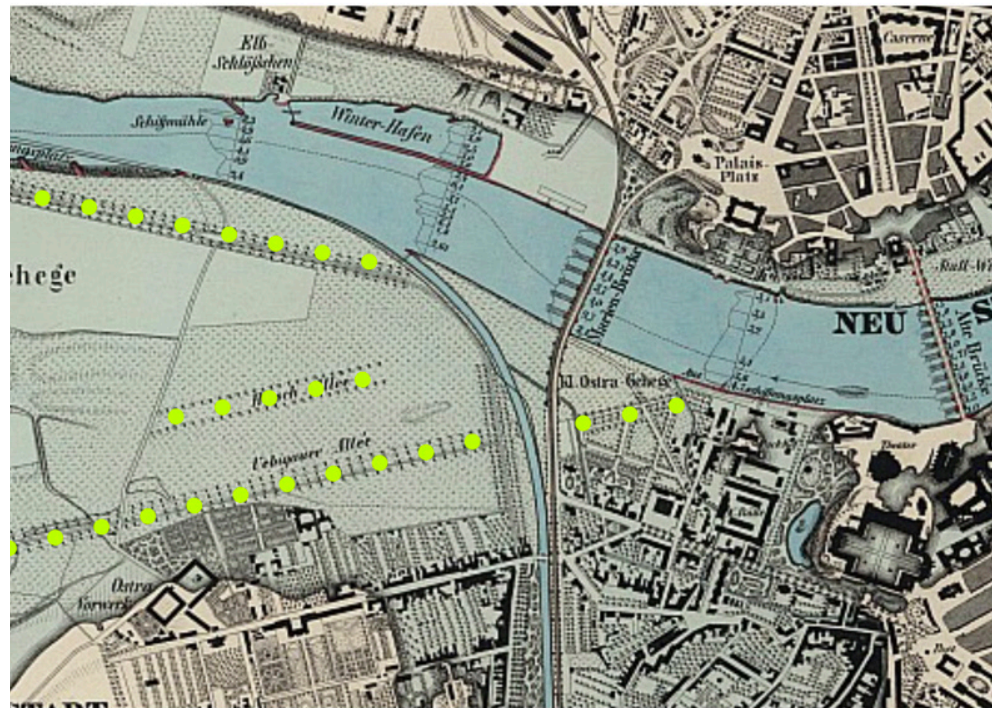
1845



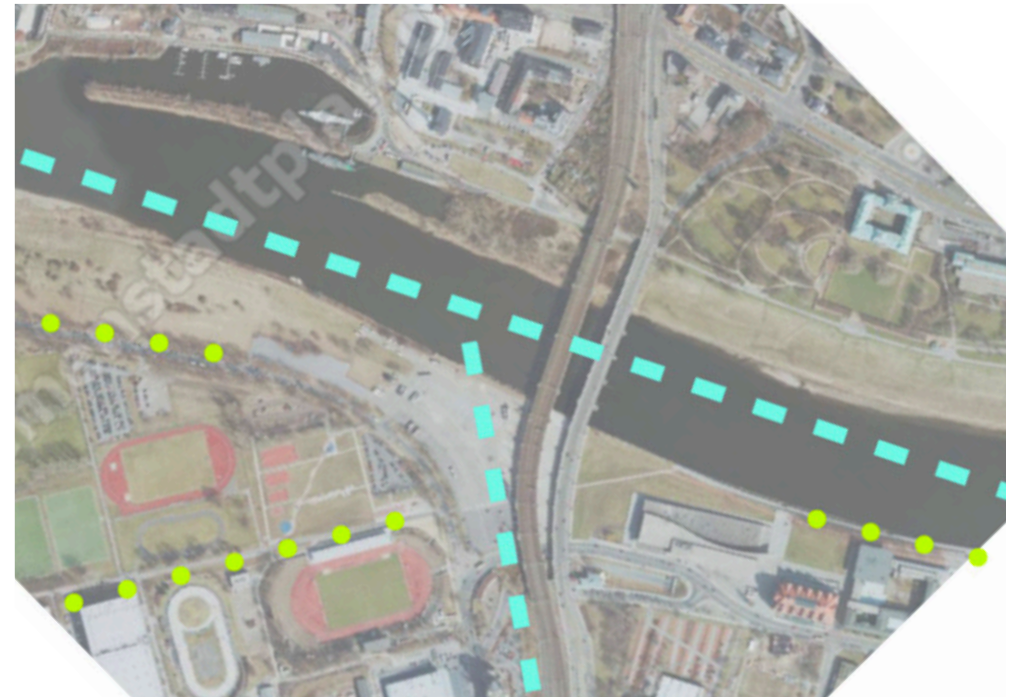
2018

HISTORY _ HISTORICAL ALLEE

7

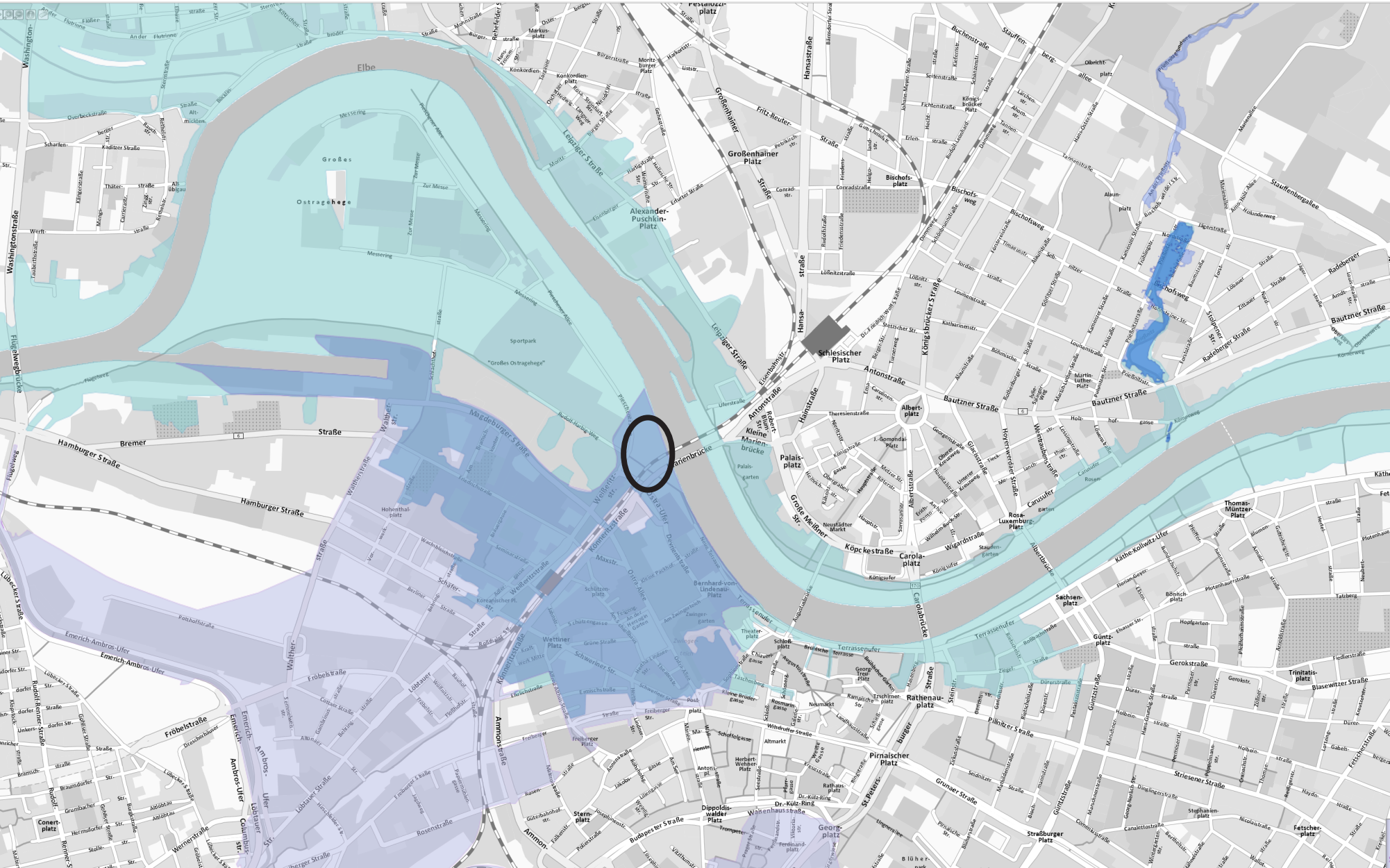


1845



NOW _ AXES: ALEES + RIVER

MAP OF FLOODED AREA

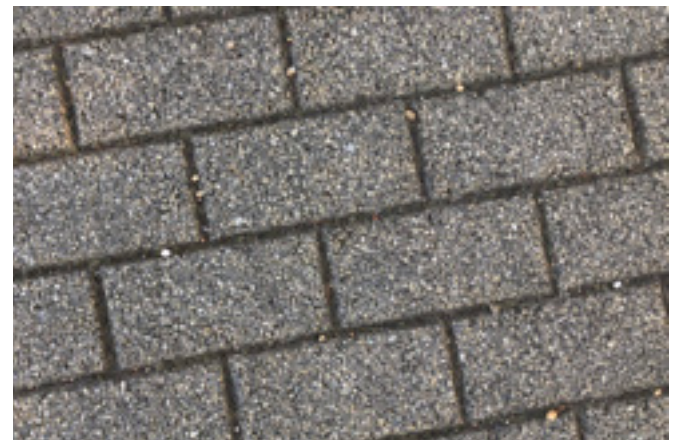
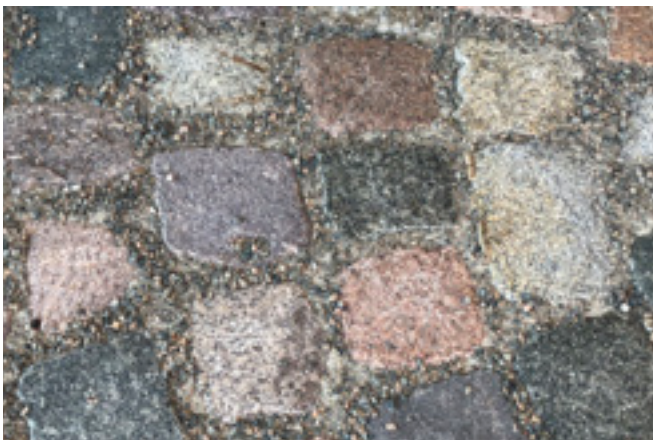
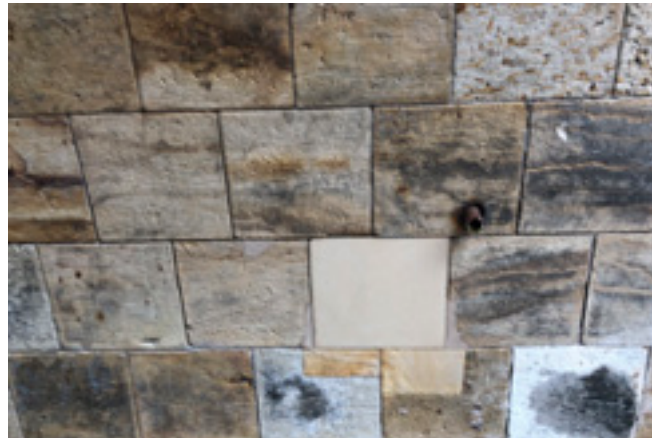


9



CURRENT SURFACES

10



CURRENT PHOTOS

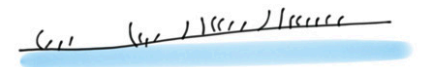
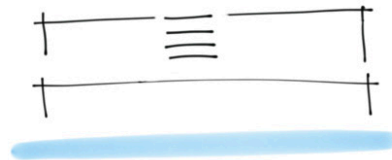
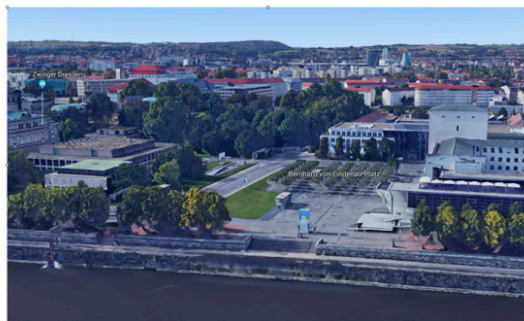
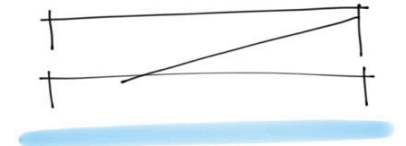
11



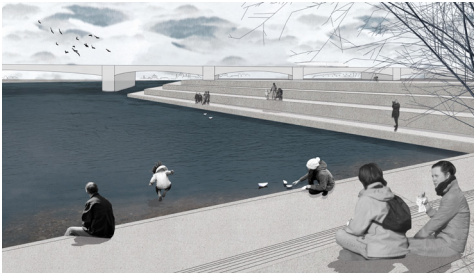


CONTEXT _ ELBE RIVER BANK

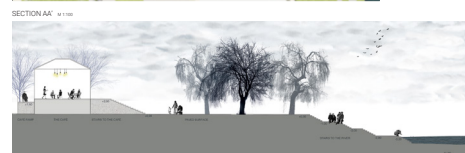
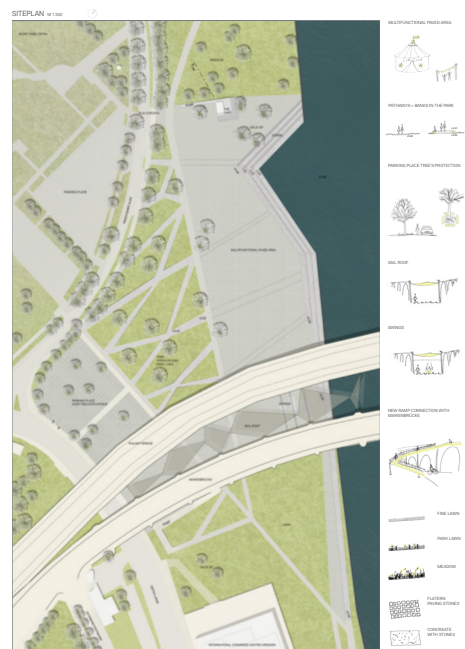
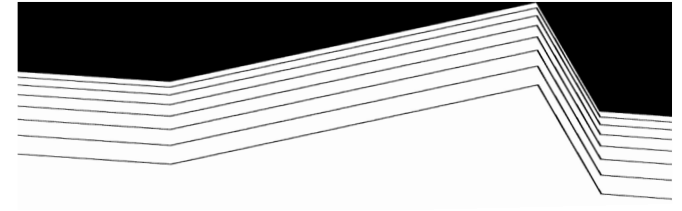
13



MY PROJECT - CONNECT OSTRA



CONNECT OSTRA

[illegible]ATELIER REHWALDT
DRESDEN, OSTRAUFERMARIE BĚLOHOUBKOVÁ
AT1K ZS 2018_2019

MY PROJECT STRIVES TO ENHANCE THE QUALITY OF PUBLIC SPACES IN THE CHOSEN AREA/ IN DRESDEN. I WOULD LIKE TO CONVERT THE AREA TO AN OPEN PUBLIC SPACE THAT WILL CREATE TRANSITION ZONE IN BETWEEN THE INNER URBAN PART AND OUTER PART WITH MORE NATURAL CHARACTER. THE LOCATION WILL HAVE A CHARACTER OF AN OPEN THE SPACE FOR PEOPLE, WHERE THEY WOULD LIKE TO GO, MEET EACH OTHER, TALK TO EACH OTHER AND ENJOY NICE VIEW TO THE CITY CENTER. IT SHOULD ALSO ALLOW TRAINSPOTTING, SITTING BY THE WATER, RELAXING AFTER SPORTS TRAINING,

CYCLING, PARTYING AT NIGHT... THE PLACE WILL HAVE USES FOR EVERY SEASON.

MY WORK CONTAINS A LOT OF
SIMPLE GEOMETRICAL LINED TO
MAKE CLEAR DISTINCTION
BETWEEN MANMADE OBJECTS AND
ORGANIC NATURE.

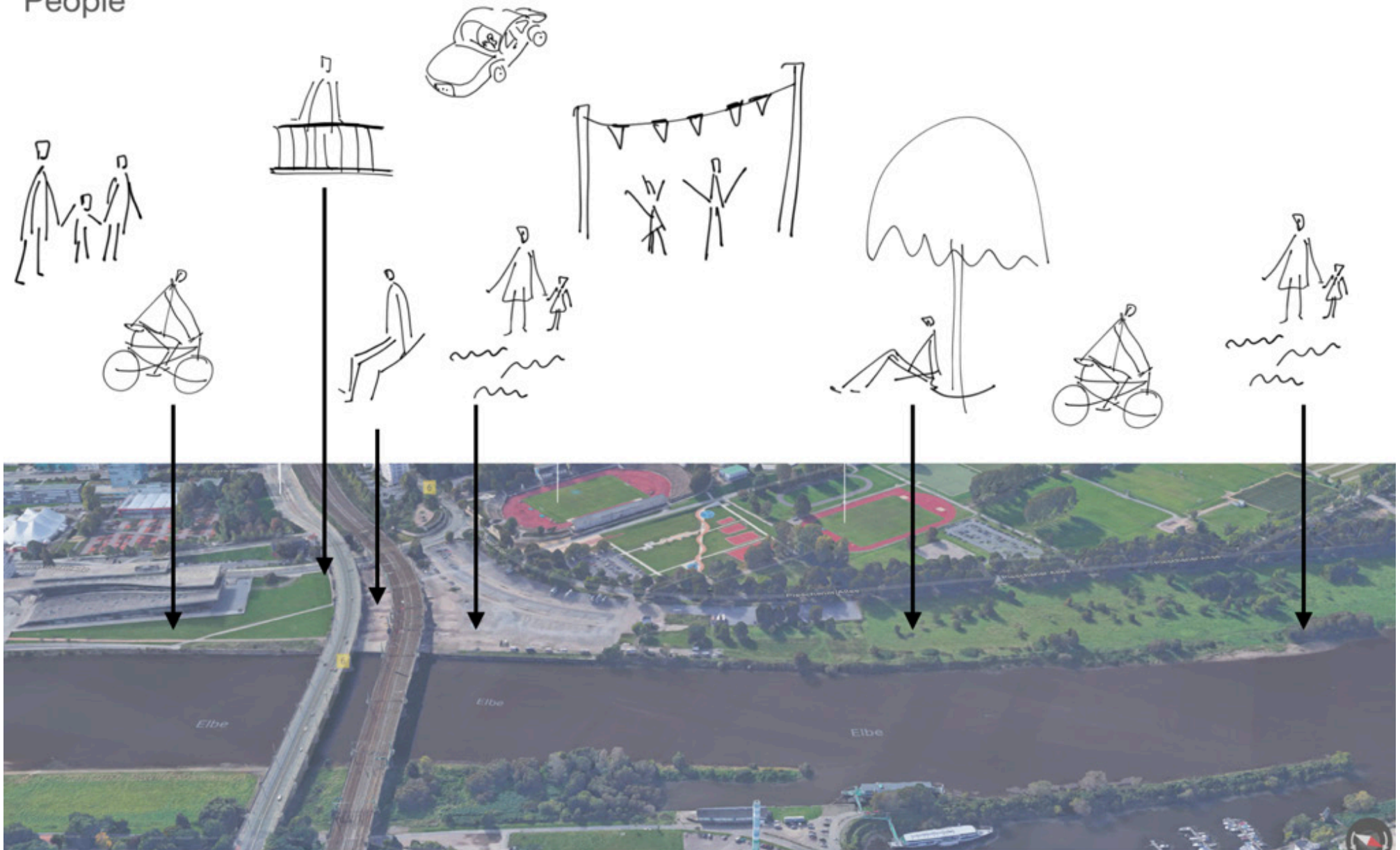
NOWADAYS THE SPACE DOES NOT TALK TOGETHER. TWO PARALLEL ARE JUST BRIDGES DIVIDING URBAN PART OF THE CITY AND MORE NATURAL ORIENTED PART. IF YOU WENT CLOSER, YOU WOULD SEE DIFFERENT DISCONNECTED SPACES, THAT AREN'T USED IN ANY VALUABLE WAY.

THE QUEST IS TO CREATE CONNECTIONS

MY PROJECT - CONNECT OSTRA

15

People



THE NEW BIKEWAY



NEW BIKEWAY ALONG THE ELBE RIVER
BANK

MATERIAL OF THE BIKEWAY: ASPHALT
AROUND: MEADOW
PLANTING NEW FRUIT TREES (MALUS
SP.)



THE NEW CAFÉ

SMALL DESERTED HOUSE THAT IS SITUATED ON HIGH PLATFORM HIGH ENOUGH TO NOT BE DAMAGED BY FLOODS I PLAN TO USE AS NEW CAFÉ

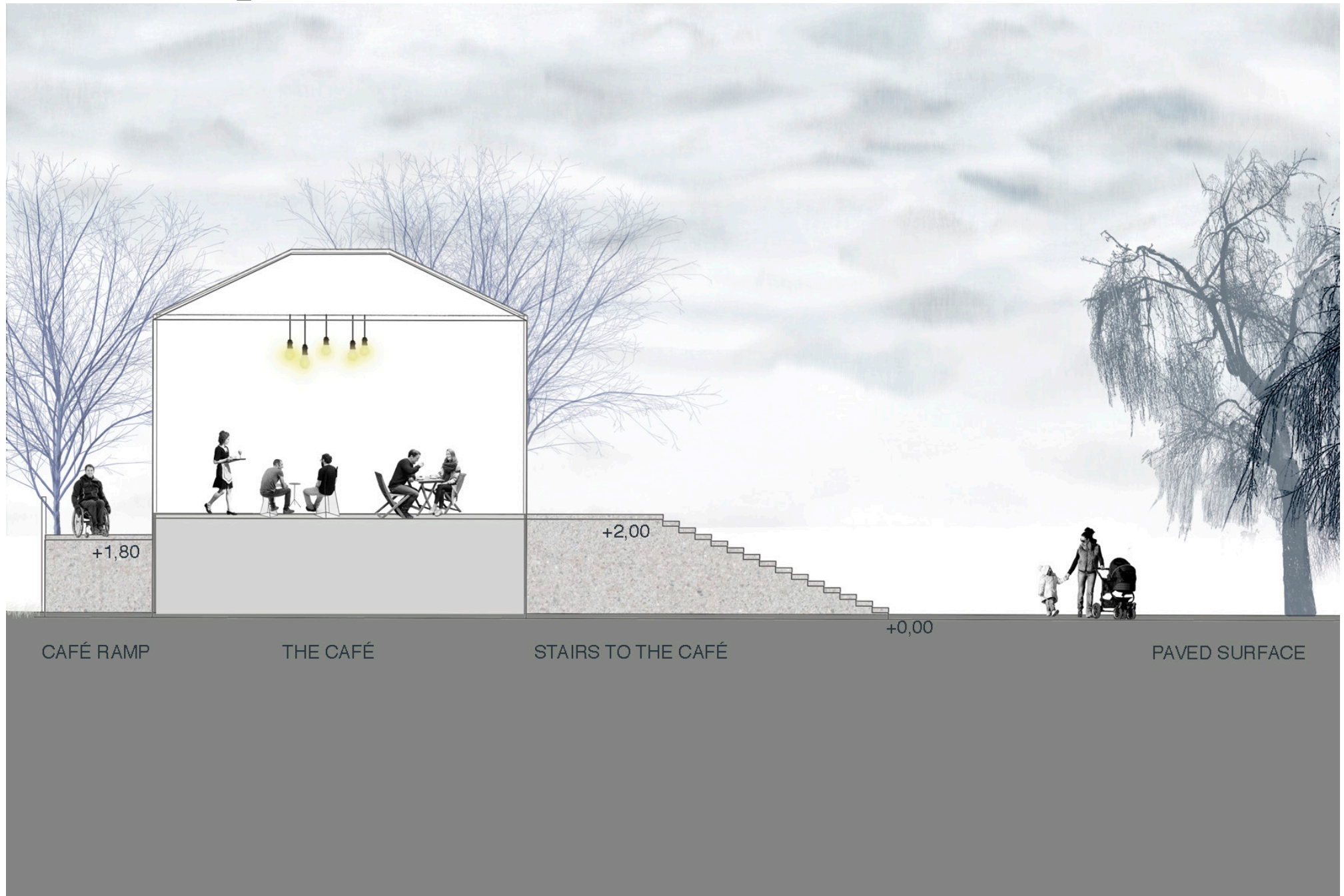
IN FROM OF THE HOUSE I PLAN TO BUILT A TERRASE WITH STAIRS AND RAMP TO CREATE BARRIER- FREE ENTRANCE

CAFÉ SUPPLY CARS WILL BE USING WEST ENTRANCE (ONLY FOR CAFÉ SUPPLY AND FESTIVALS) TO THE MULTIFUNKTIONAL PAVED AREA



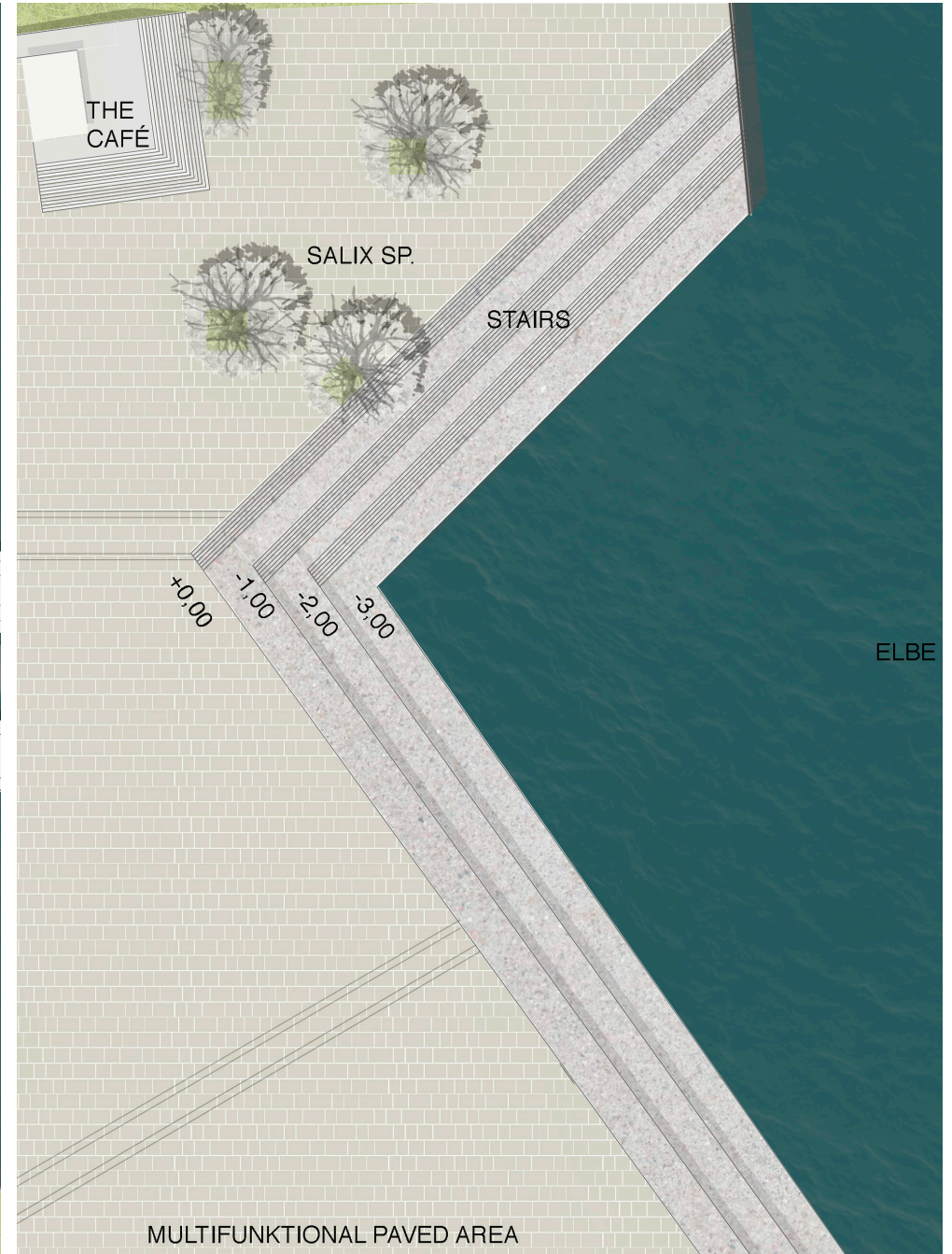
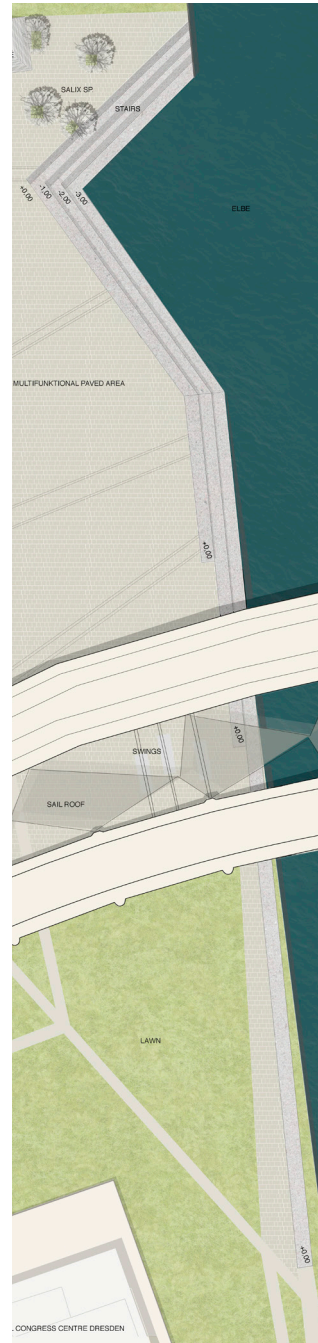
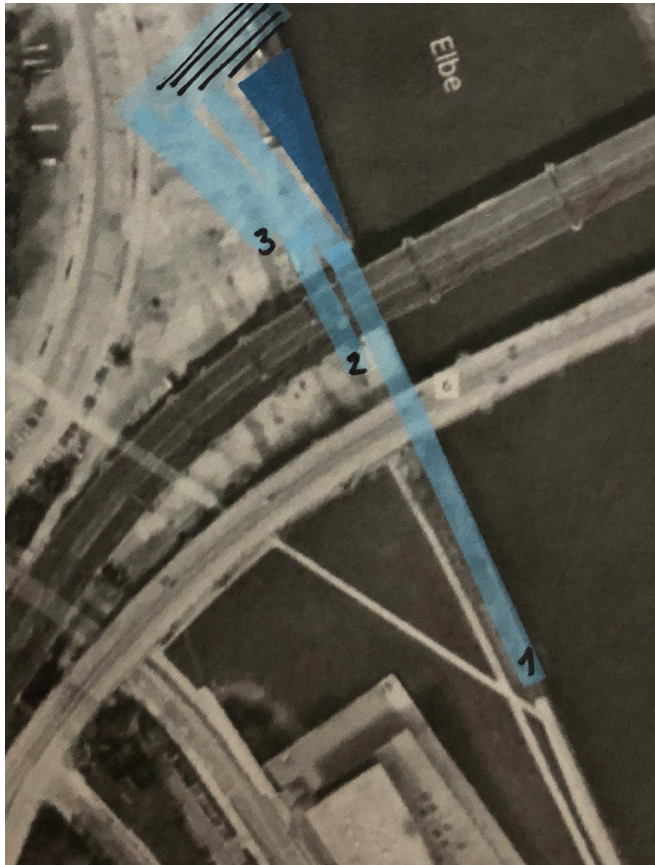
THE NEW CAFÉ _ SECTION AA'

18



STAIRS TO THE ELBE WATER LEVEL

A CONNECTION IN BETWEEN UPPER RIVER BANK AND ELBE WATER LEVEL BY CREATING THREE SLIGHTLY SLOPING TERRACES LEADING ALONG THE SOUTHERN ELBE RIVER BANK AND ENDING AS STAIRS NEAR BY THE NEW CAFÉ
THE TRIANGLE SHAPE REMAINS THE HISTORICAL RIVER INFLUX



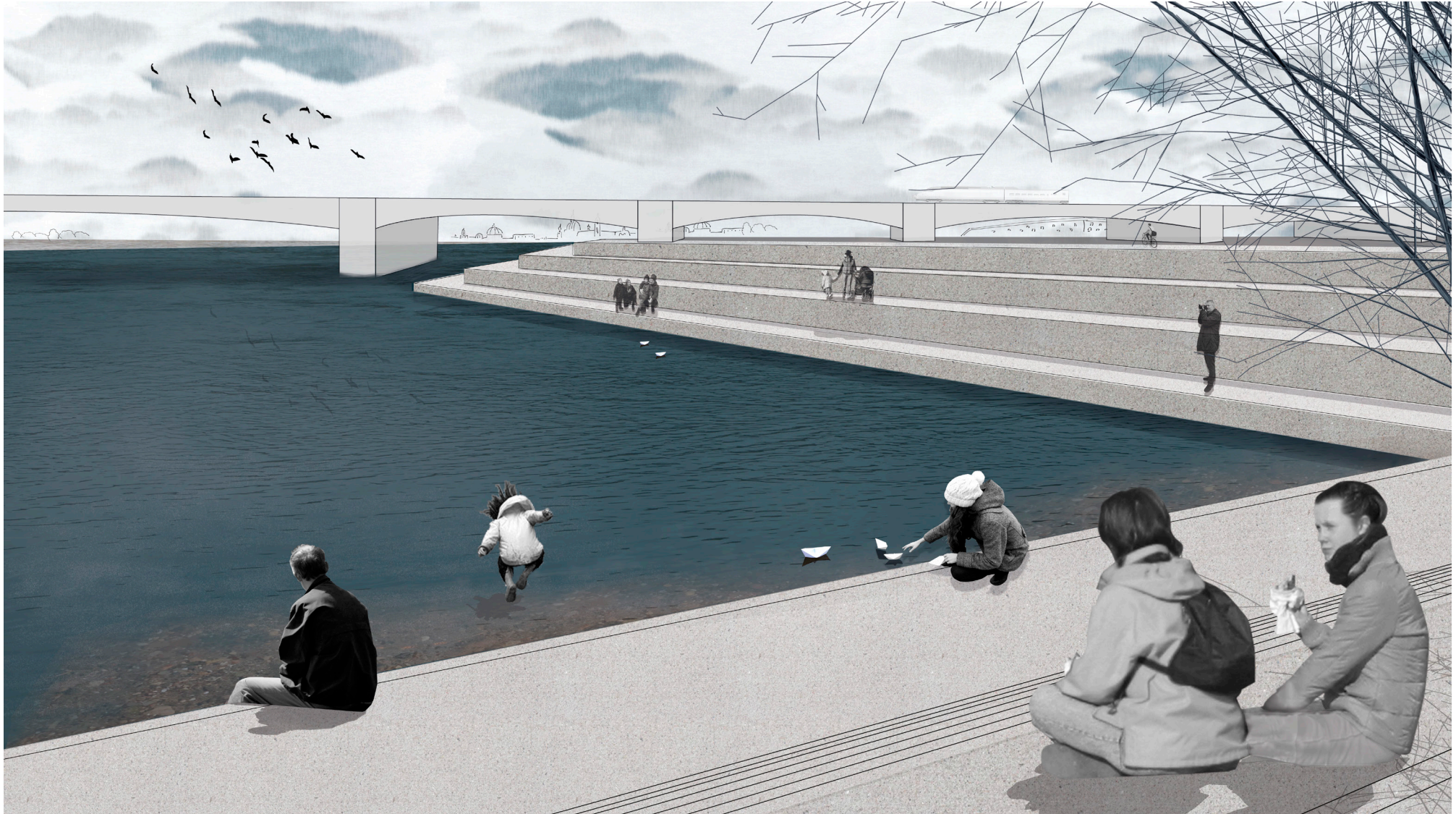
STAIRS TO THE ELBE WATER LEVEL _ SECTION AA'

20



STAIRS TO THE ELBE WATER LEVEL

21



ENTRANCE TO THE WATER LEVEL
WILL BE MADE TO BE USEABLE
AT CHANGING WATER LEVELS

MATERIAL: CONCRETE WITH STONES
(THE SAME STONES THAT ARE USED
FOR PAVING MULTIFUNCTIONAL AREA)



THE NEW PARK

CREATING NEW PARK BY ADDING
GRASS SURFACE AT THE 'OSTRA'
LOCATION THAT WILL ALSO HELP
WATER RETENTION

NEW PARK LAWN AND NEW PLANTED
TREES (POPULUS ALBA) IN THIS ZONE
WILL BE INTERLACED BY CONCRETE
PATHS



THE NEW PARK

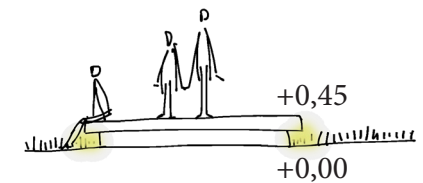
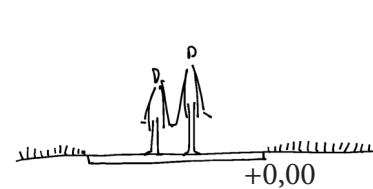
24



THE PATHS WILL BE SLIGHTLY SLOPED
STARTING AT THE GROUND LEVEL
ON THE EDGES OF THE PARK AND
THEN THEY WILL RISE TO THE 45 CM
AT HIGHEST POINT

THEY SHOULD LOOK LIKE RIVER
WAVES RISING IN THE PARK
TO REMAIN PEOPLE OF THE OLD
RIVER

PATHWAYS = BENCHES
ON THE SIDES OF THE PATHWAYS
WILL BE PLACED LIGHTS TO CREATE
INTIMATE ATMOSPHERE
AT NIGHTTIME

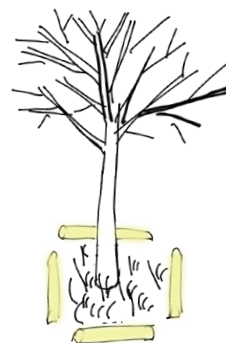


PARKING PLACE

THE SURFACE: PAVING STONES PAVED IN MOSAIC 'SÄCHSISCHE PFLASTER'

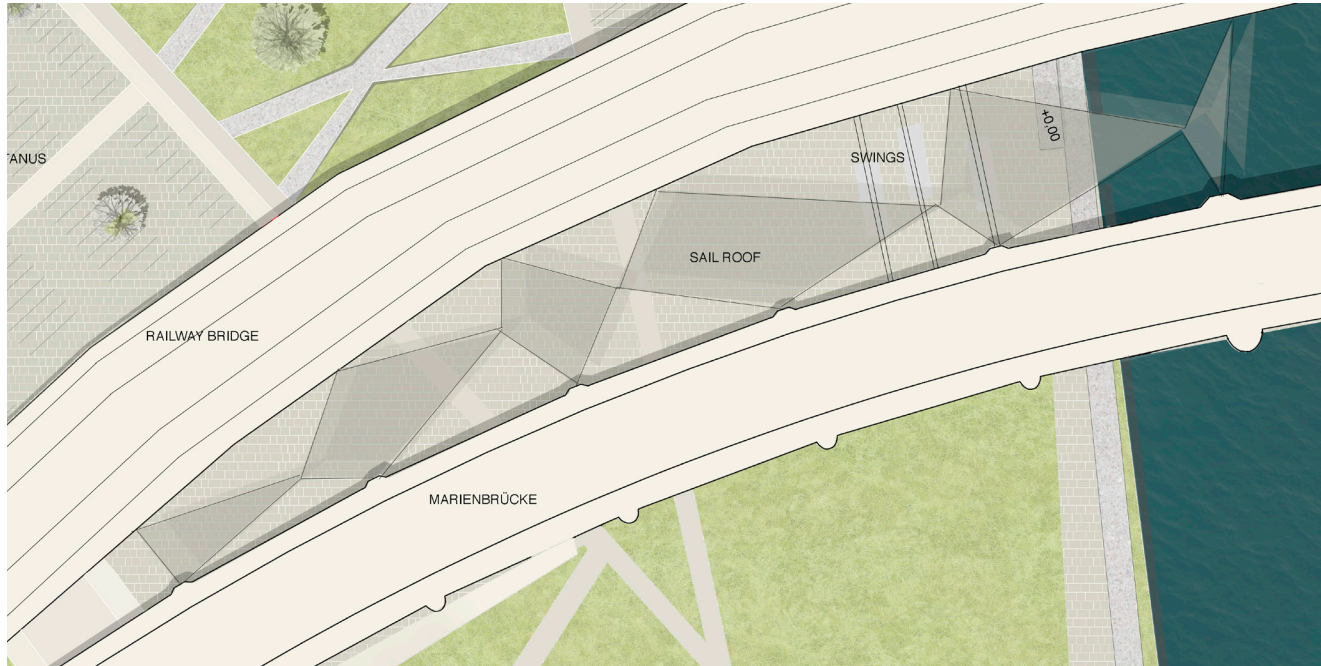
IN THE PARKING PLACE AREA WILL BE
PLANT NEW TREES (ACER PSEUDO-
PLATANUS) TO BRING SHADOW THERE

THE TREES WILL BE PROTECTED BY CONCRETE ELEMENTS



SPACE IN BETWEEN THE BRIDGES _ SAIL ROOF

26

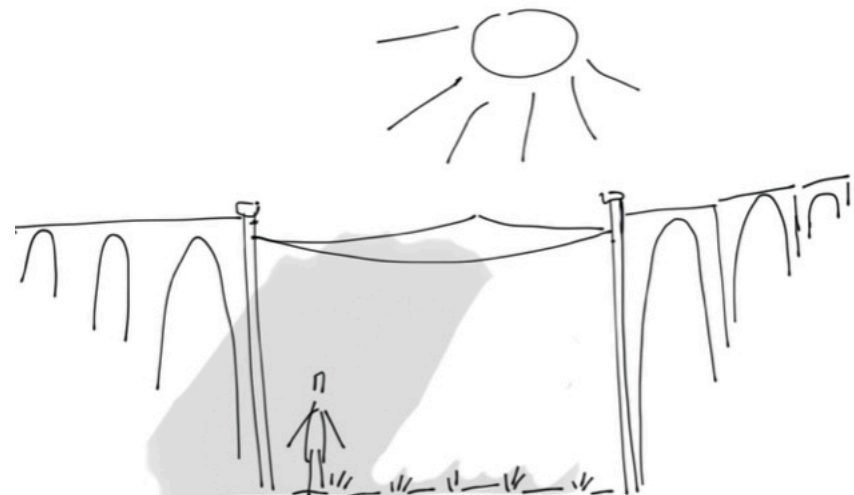


IN BETWEEN THE BRIDGES WILL BE CREATED NEW SPACE BY PLACING THERE SAIL ROOF

MATERIAL: SEMIPERMEABLE CLOTH FIXED ON METAL COLUMNS



WATER PERMEABLE



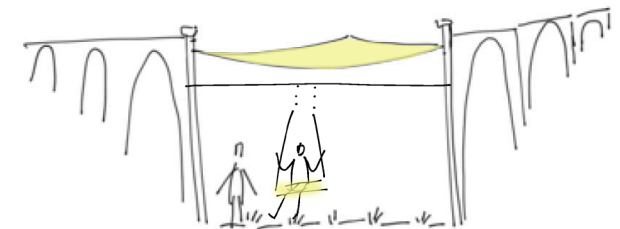
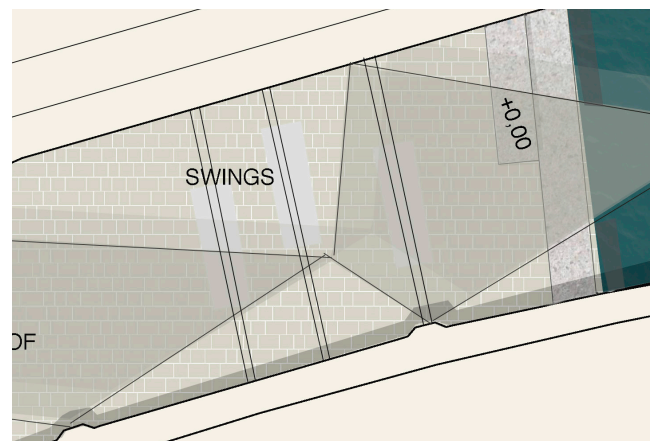
SHADOW WHEN THE SUN SHINES

SPACE IN BETWEEN THE BRIDGES _ SWINGS

PLACE UNDER THE BRIDGES OFFERS WONDERFUL VIEW TO THE DRESDEN CITY CENTRE

I PLACE THERE SWINGS TO MAKE THE PLACE MORE PLAYFUL

THE FALL ZONE IS PLANNED TO BE FROM RUBBER MATERIAL



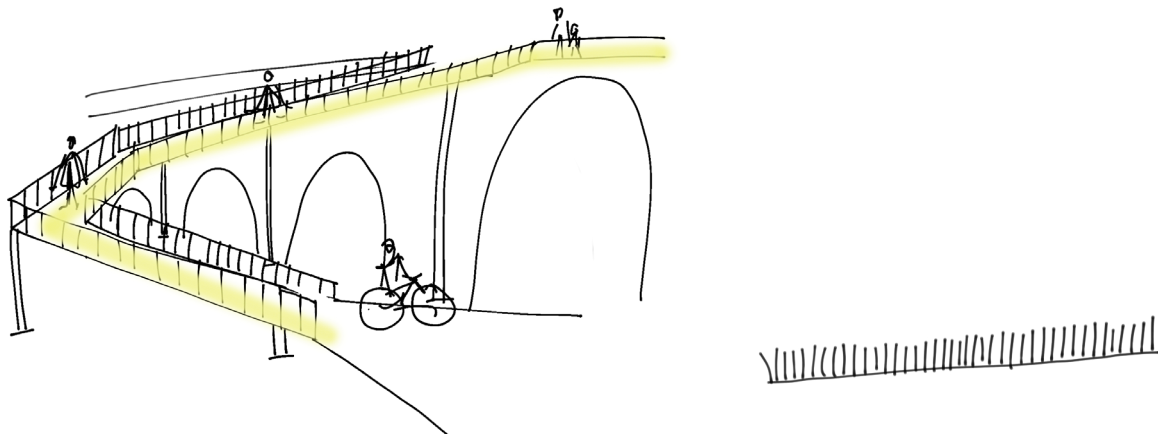
RAMP CONNECTION WITH MARIENBRÜCKE

28



THE OTHER RIVER BANK WILL
CONNECTED BY BUILDING THE NEW
RAMP THAT WILL CONNECT THE
UPPER MARIENBRÜCKE LEVEL AND
RIVER BANK LEVEL

THE RAMP IS CONNECTED WITH
BIKEWAY AND SURROUNDED WITH
SHORT CUTTED LAWN



REFERENCES

OSLO OPERA HOUSE, SHOHETTA

AMPHITHEATER, GROSSE GARTEN,
DRESDEN

ERFURT, REHWALDT
LANDSCHAFTARCHITEKTEN

