

ATELIER REHWALDT
PRAHA, Kampa

MARIE BĚLOHOUBKOVÁ
AT2K ZS 2018_2019

ZAHRADA ČERTOVKA

LOCATION

HISTORY

SITUATION NOWADAYS

MY PLAN

1. GARDEN

2. PAVED SPACE

3. CONNECTING SPACE

4. PETANQUE PARK

REFERENCES

additional analysis



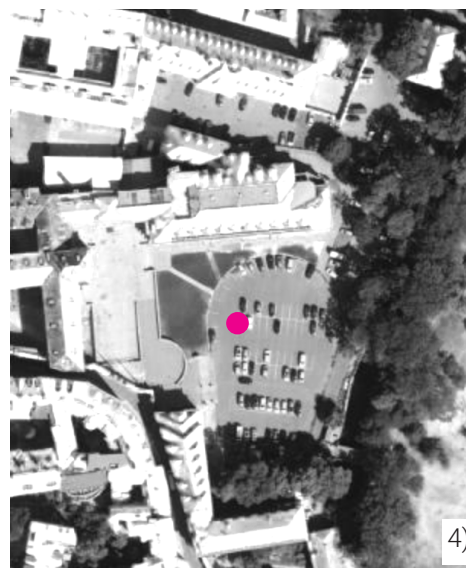
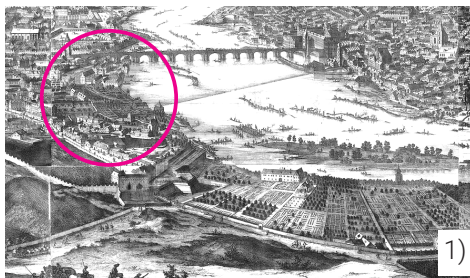
WIDER CONNECTIONS

250m 250m



HISTORY

SITUATION NOWADAYS



- 1) gardens, 1886
- 2) old armory house, 1884
- 3) Sokol in Tyrš's house,
since 1921
- 4) nowadays not valuable
used as a parking place

Location of Zahrada Čertovka project was divided into four zones:

1. Garden with perrenials beds and paths leading to water element, with its calm water, that is in sharp contrast to wild stream of Čertovka canal. Shape of the garden is inspired by old armory, that used to stand here.
2. Paved space in front of Hotel Kampa with smaller darker tiles.
3. Connecting space paved with larger lighter stones, that offers connection to the park through two bridges. If you would walk along the Čertovka canal, you could find svmall stairs, that lead to Čertovka Window.
4. Petanque park, playing area in front of Kampa theatre.

1. GARDEN



1. GARDEN

interpretation of the old historical garden in figure of the old armory house

new planted *Platanus acerifolia*

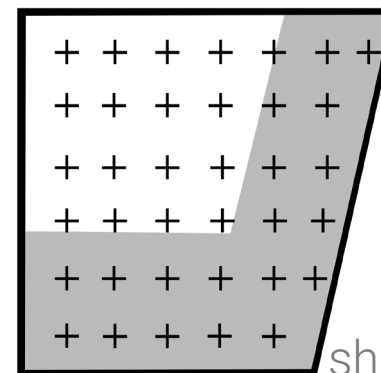
Luzula sylvatica under the trees

hoggen pathways - material from quarry Zbraslav

water element- calm endless water edge in contrast of steam of Čertovka canal

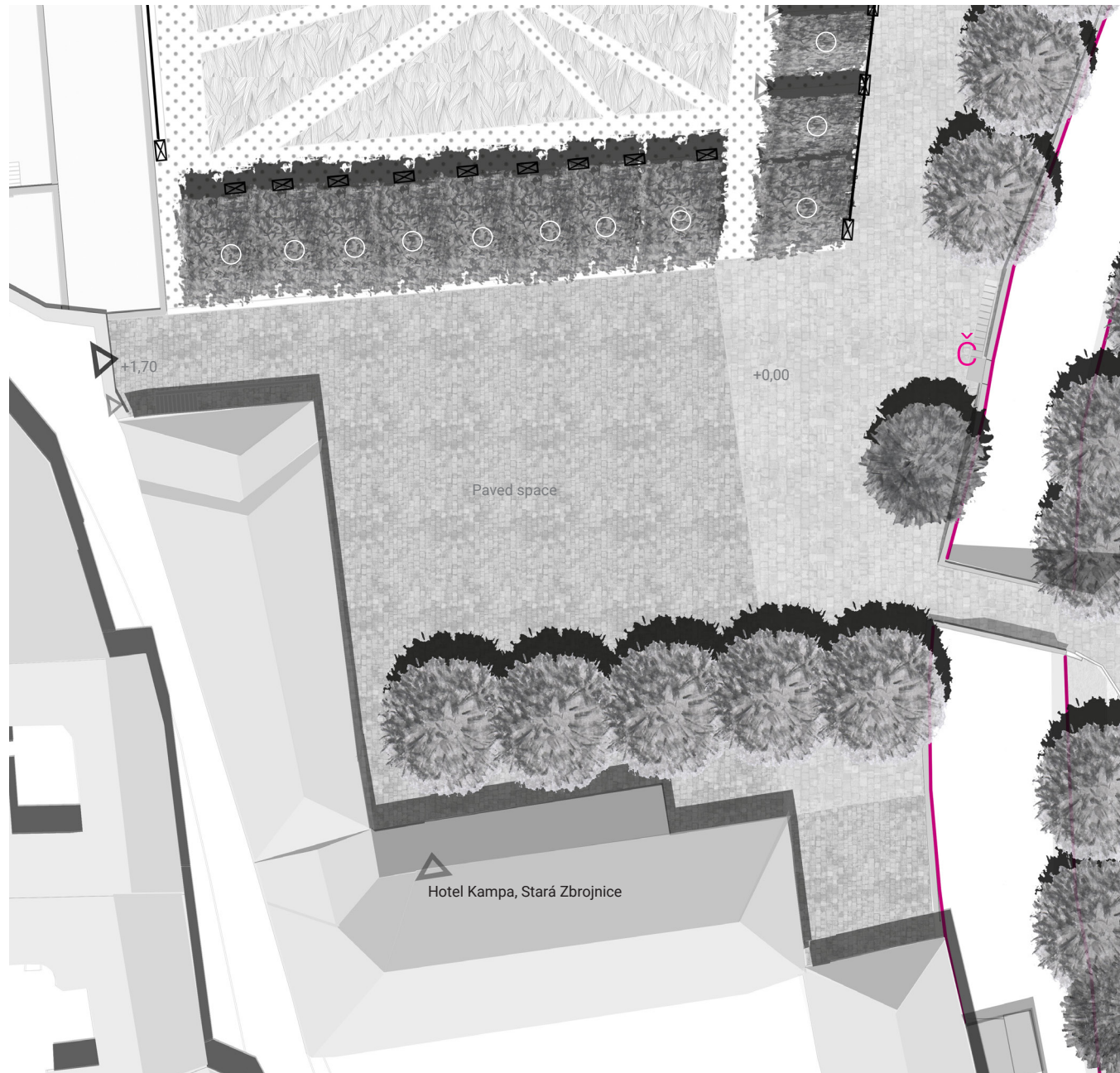
perennials beds

sunny



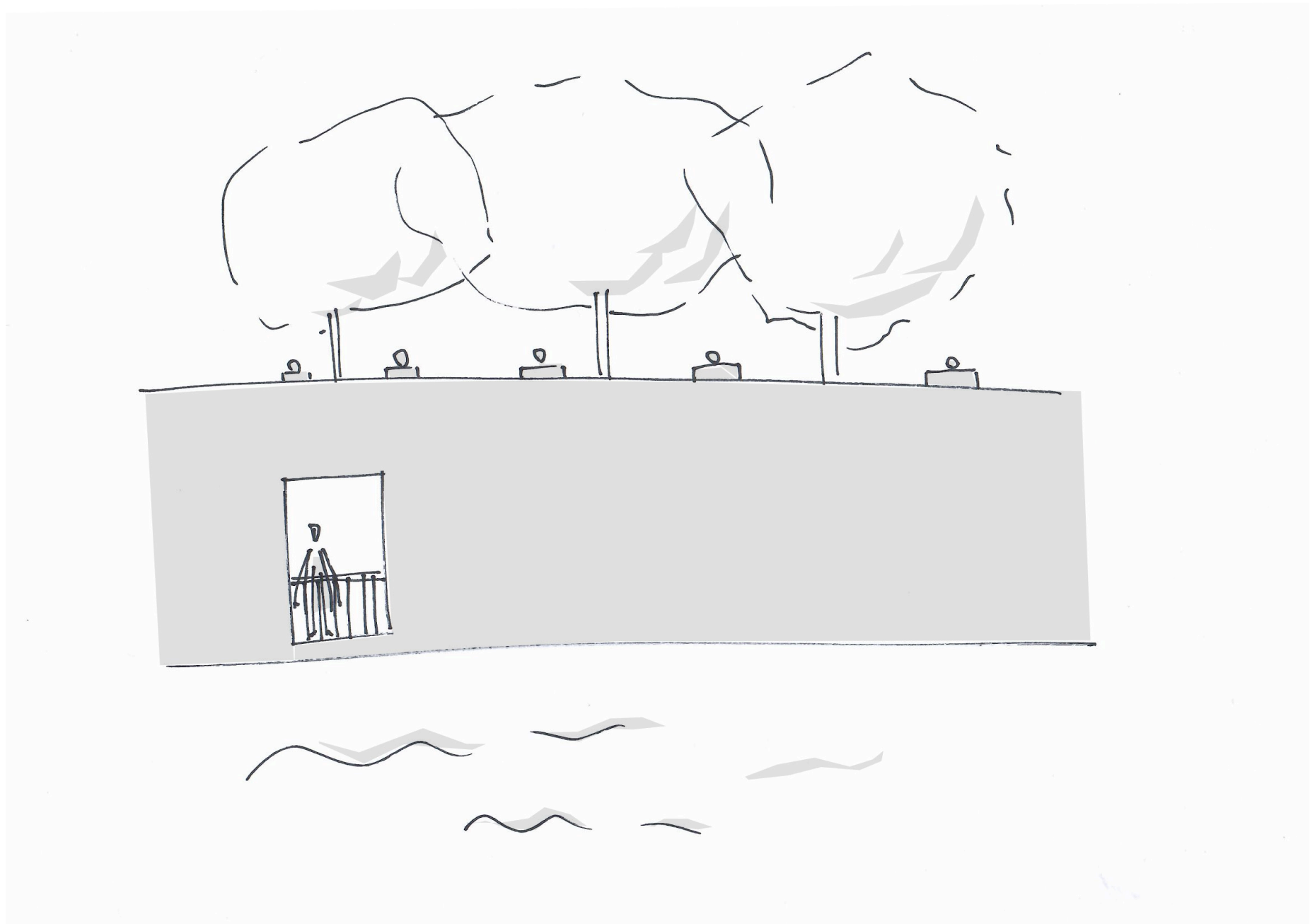
shady conditions

2. PAVED SPACE in front of the Hotel Kampa



3. CONNECTING SPACE

Čertovka Window



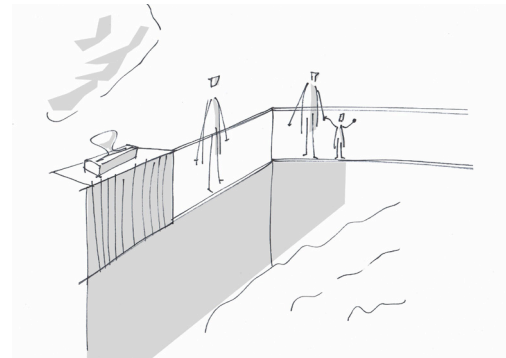
3. CONNECTING SPACE

Glass bridge

highlights connection in between Tyrš's house and Kampa park



Tyrš's house



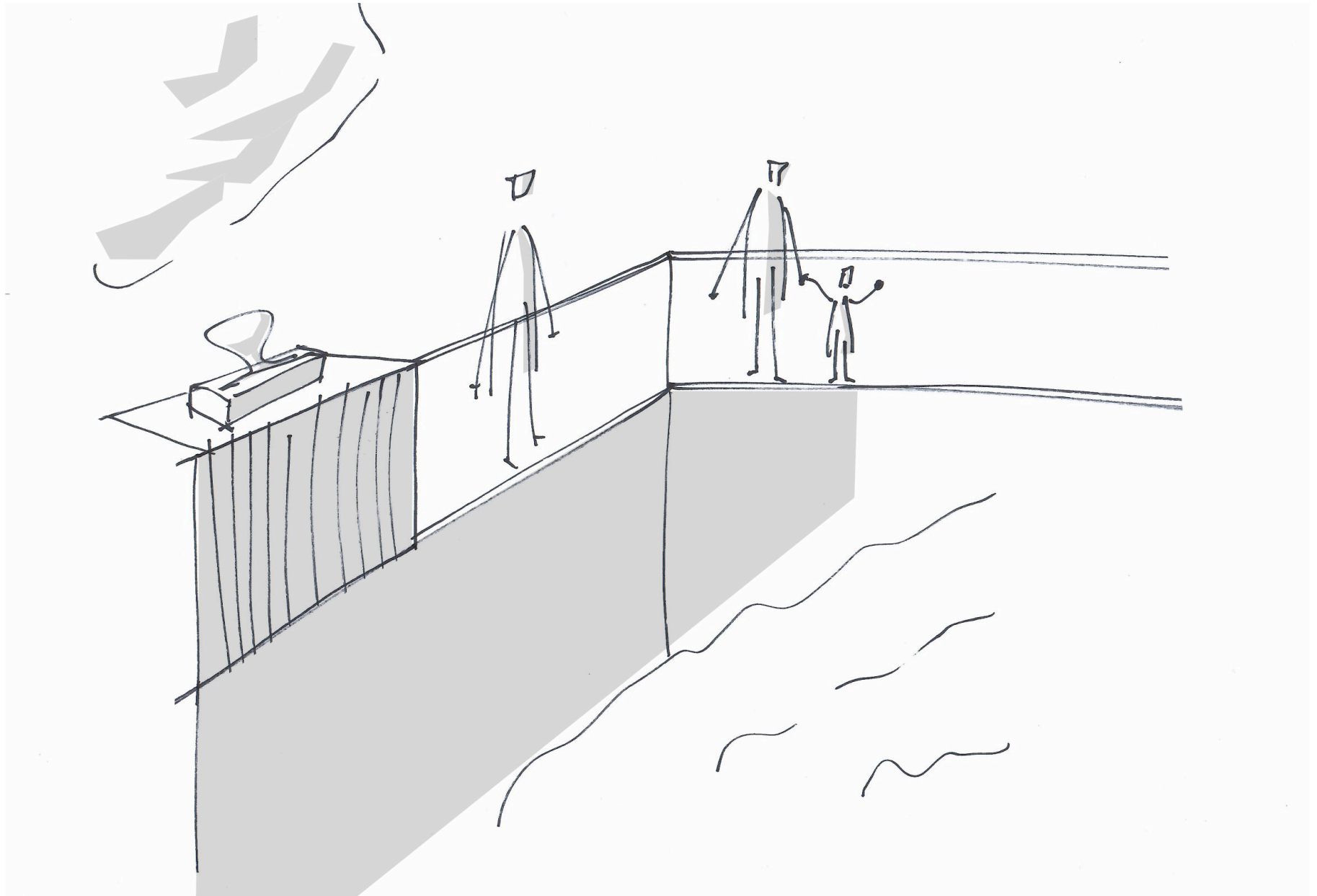
Glass bridge



Sedící dívka from J. Hána
in Kampa park

3. CONNECTING SPACE

Glass bridge



4. PETANQUE PARK





Rehwaldt Landschaftsarchitekten
Projekt GEW, Dresden, Germany



Paris, France

additional analysis